



# 2025 College Sailing Women's Fleet Race National Championship

*Hosted by St. Mary's College of Maryland*

*Teddy Turner Waterfront & James P. Muldoon River Center*

*St. Mary's City, MD*

*May 20-23, 2025*

***Supporting Sponsorship from: Zim and West Coast Sailing, Official Supplier of ICOSA;***

***Marlow Ropes, Official Supplier of ICOSA;***

***Dermatone, Official Skincare Partner & Supplier of College Sailing;***

***Quantum Sails, Sponsor of Quantum Women's Sailor of the Year***

## NOTICE OF RACE

### 1. RULES

1.1. The Organizing Authority (OA) is the Inter-Collegiate Sailing Association in conjunction with St. Mary's College of Maryland.

1.2. This regatta shall be governed by the current Racing Rules of Sailing (RRS), ICOSA Procedural Rules, ICOSA Collegiate Dinghy Class Rules, ICOSA Championship Conditions, and this Notice of Race, except as modified by the Sailing Instructions.

### 2. CAMERAS AND ELECTRONIC EQUIPMENT

2.1. Boats may be required to carry cameras, sound equipment or positioning equipment as specified by the Organizing Authority.

2.2. U.A.V. / Drone operation is prohibited by anyone other than the Organizing Authority or media partners in the vicinity of Horseshoe Bend May 20<sup>th</sup> to May 30<sup>th</sup>.

### 3. ELIGIBILITY AND ENTRY

3.1. All entrants must meet ICOSA eligibility requirements in the ICOSA Championship Conditions

3.2. Teams shall accept their berths in accordance with ICOSA Championship Conditions 7.1.

3.3. Entry fee is \$500 per team payable online on the Championships page, [nationals.collegesailing.org](http://nationals.collegesailing.org).

#### **4. SCHEDULE**

##### **Women's Fleet Race National Semi- Finals**

###### **Monday, May 19**

1900 Coaches Briefing on Zoom, link to be posted to the Official Notice Board (Techscore)

###### **Tuesday, May 20**

0900 Report Time

0930 First Warning

###### **Wednesday, May 21**

0900 Report Time

0930 First Warning

1700 No Start Signal After

##### **Women's Fleet Race National Finals**

###### **Thursday, May 22**

0900 Report Time

0930 First Warning

###### **Friday, May 23**

0900 Report Time

0930 First Warning

1700 No Start Signal After

Awards immediately following racing – Teddy Turner Waterfront, James P. Muldoon River Center

#### **5. FORMAT**

5.1. The format is detailed in the ICSA Championship Conditions

#### **6. BOATS & EQUIPMENT**

6.1. 2022 Zim 420E's and 2025 Zim FJ's will be provided for competitors.

6.2. The standing rigging shall not be adjusted.

#### **7. SAILING INSTRUCTIONS**

7.1. The Sailing Instructions will be available by Sunday, May 17 on Techscore.

## **8. RACING AREA**

8.1. The Racing Area will be on the St. Mary's River in the vicinity of Horseshoe Bend and South of Church Point.

## **9. SPECTATORS**

9.1. The James P. Muldoon River Center sailing facilities including the buildings and docks are considered 'Field of Play' areas which are restricted to credentialed team members including any team staff, credentialed coaches, facility staff, race officials, and regatta organizers. Credentials must be worn or available to be displayed at all times when not sailing or rotating boats. (See Addendum B Map)

9.2. There will be a 'spectator exclusion zone' 100 yards around the race course. Spectators shall receive one warning upon entering the exclusion zone, unless directed by a race official. The second entrance shall be cause for a protest by the OA against the affiliated team(s) under RRS 41 and RRS 60.1.

9.3. Spectator boats shall not dock at St. Mary's College of Maryland Waterfront; including Piers and Floating Docks. This is considered a 'Field of Play' and is only open to registered competitors, coaches, official team support personnel, regatta officials and official media personnel. (See Addendum B Map)

## **10. TROPHIES**

10.1. Trophies will be awarded to the top three teams, low point A Division, and low point B Division.

10.2 Perpetual Trophies:

1st Place Team - *Henry A. Morss Trophy*

2nd Place Team - *Kleckner Trophy*

3rd Place Team - *Ann Campbell Trophy*

Low Point A Division - *Madeleine Cup*

Low Point B Division - *Judy Lawson Trophy*

## **11. RIGHTS TO USE NAME AND LIKENESS**

11.1. By participating in this event, competitors automatically grant to the Organizing Authority and the event sponsors the right, in perpetuity, to make, use and show, at their discretion, any photography, audio and video recordings, and other reproductions of them made at the venue or on the water from the time of their arrival at the venue, until their final departure, without compensation.

## **12. PRACTICE EXCLUSION ZONE**

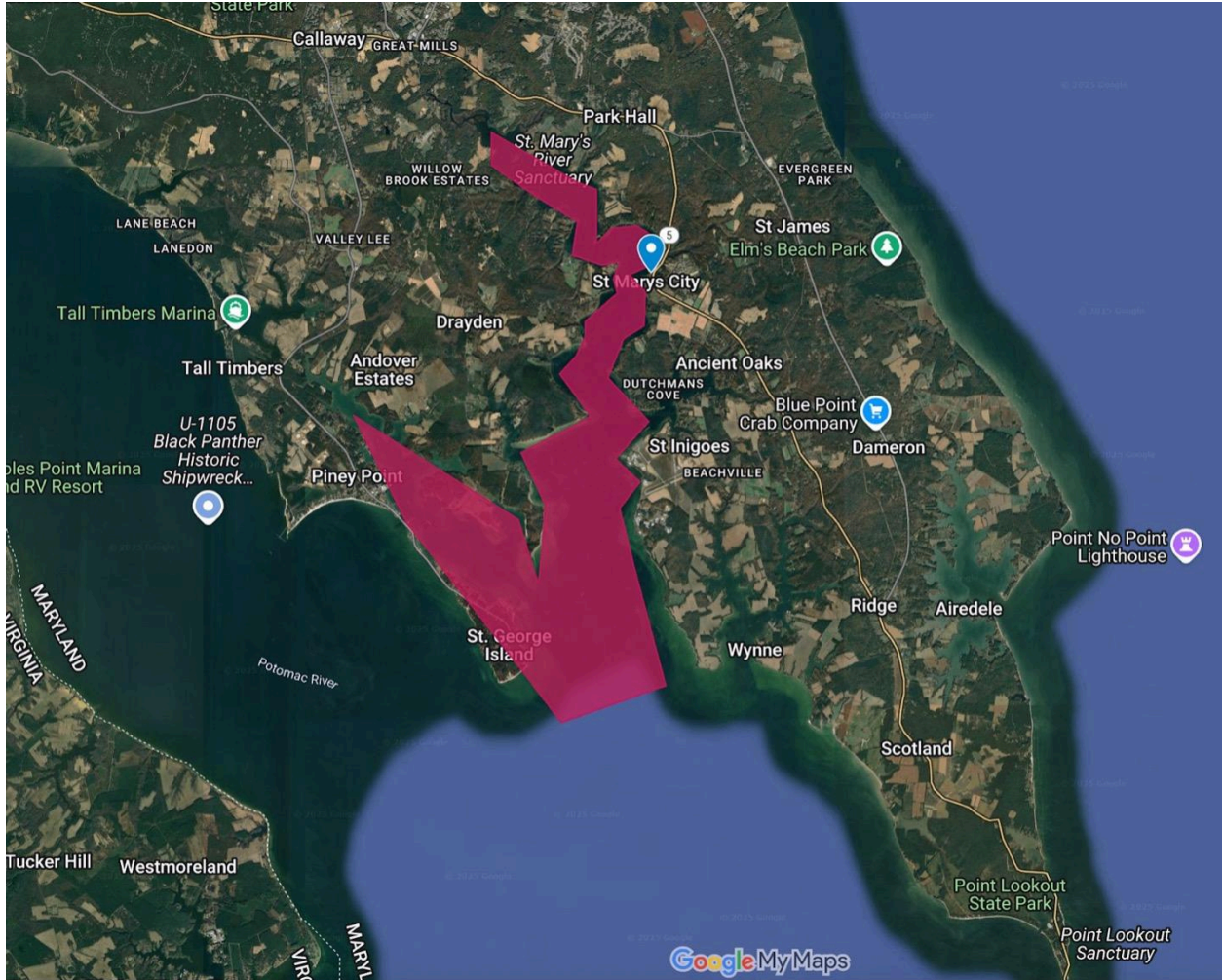
12.1. Per ICSA PR 27, the Practice Exclusion zone is all waters of the St. Mary's River south to the Potomac River. (See Addendum A Map)

## **13. FURTHER INFORMATION**

Visit: [nationals.collegesailing.org](http://nationals.collegesailing.org)

# ADDENDUM A – MAP

National Championship practice exclusion zone. (PR 27)



# ADDENDUM B – MAP

National Championship 'Field of Play'.

